

Luxator preserves bone integrity and extraction is performed with a minimum of tissue damage

FIXUS 1, storage for Luxator Instruments

Directa Luxator extraction instruments are packed in Fixus 1 container. The Fixus 1 is designed to organise, store and protect Luxator instruments between treatments. It protects and by that extends the life of Luxator instruments for a safe and hygienic handling. Autoclavable.



Luxator® P-Serie

A new generation of extraction instruments

Ideal to probe and separating. Initiating the extraction process with the P-series range will simplify the work.

Prod No	Product Description
506631	Luxator P1, straight blade, dark green
506632	Luxator P2, curved, light blue
506633	Luxator P3, contra angle, dark blue
506634	Luxator P4, dual edge, lilac
506635	Luxator Kit PK4, 4pcs



Video 1: Luxator P-Series

A new generation of extraction instruments



Video 2: Luxator P-Series

Tactility, sight and precision



Maximum tactility, sight and precision. The new Luxator P-Series features a very user-friendly design. The penholder grip gives increased tactility, an important feature as these new instruments are thinner and sharper than the original Luxator instruments. Minimum effort is required to enable these instruments to reach the alveolar socket and cut the periodontal ligament, enabling less traumatic extractions with minimal bone loss.

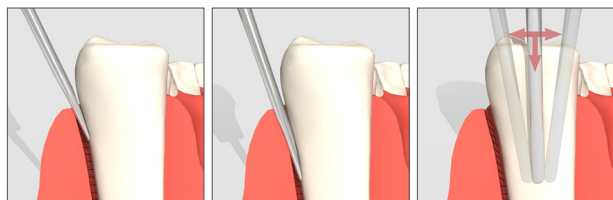
Available in our most popular shapes. The Luxator P-Series instruments come in four popular Luxator blade shapes: straight, inverted curved, contra-angle and dual edge. They can be purchased separately or as a kit.



Luxator® Periotome

The fine tapered blade compresses the alveolar, cuts the membrane, and gently eases the tooth from its socket reducing damage.

1. Ergonomic design
2. Atraumatic extraction
3. Maximum tactility
4. Wide range of sizes and shapes*
5. Made on Stainless steel or Titanium coated**
6. Autoclavable Fixus 1 case included



Luxator Periotome	Luxator Periotome Short*	Luxator Periotome Titanium**	Product Description
L2S/506352	S2S/506358	L2S TIN/506434	2 mm, straight blade, dark green
L3C/506341	S3C/506359		3 mm, curved blade, black
L3S/506340	S3S/506360	L3S TIN/506433	3 mm, straight blade, grey
L3CA/506353	S3CA/506361		3 mm, contra angle, dark blue
L3IC/506354			3 mm, inverted curved, light blue
L5C/506343			5 mm, curved blade, brown
L5S/506342	S5S/506362		5 mm, straight blade, tan
		506436 L3A TIN	3 mm, titanium angled blade, lilac



Use

Apical/ and or interproximal
General use
Interproximal
Lingual and or Distal / Molar
General, Lingual and or Distal
Large molar roots, General use
Interproximal
Molar

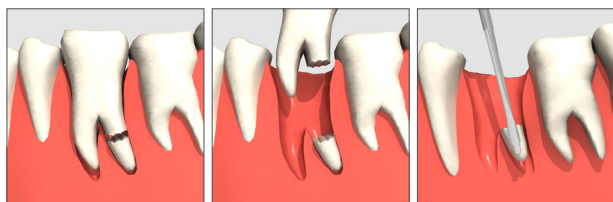


Video:
How to use Luxators Periotome,
Luxator Forte & Luxator P-Series

Luxator® Dual Edge

Innovative dual purpose tip.

Safer stepped insertion reduces the risk of slipping. Ideal for deeply fractured teeth and decayed roots. Available in 2 different blade tips. Autoclavable Fixus 1 case included.



Prod No	Product Description
506356	Luxator Dual Edge DE3, 3/1.5 mm, dual edge, grey
506357	Luxator Dual Edge DE5, 5/3 mm, dual edge, brown
506435	Luxator Dual Edge DE3 TIN, 3/1.5 mm, dual edge, grey



Luxator® Forte Elevator

For controlled and safer tooth elevation

Ergonomic handle and cornered rigid tip that enables elevation of roots with less risk of damaging the instrument. The cornered tip design grasps dentine or root cementum for controlled and safer tooth elevation. Available in 4 different blade tips. Autoclavable Fixus 1 case included.

Prod No	Product Description
506370	Luxator Forte F25, 2.5 mm, straight blade, green
506371	Luxator Forte F32, 3.25 mm, straight blade, grey
506373	Luxator Forte F32C, 3.25 mm, curved blade, blue
506372	Luxator Forte F40, 4 mm, straight blade, light brown

