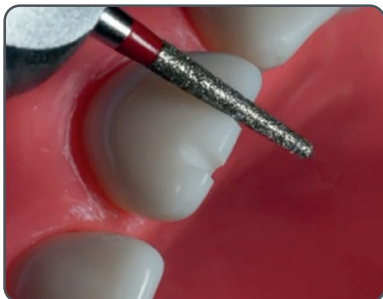


Tooth Reduction Preparation (Anterior / Posterior)

1



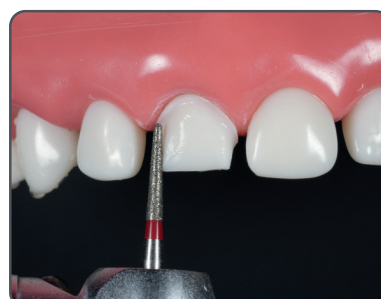
Incisal / Occlusal reduction
≤ 1 mm

2



Facial / Buccal reduction
≤ 1 mm
with supragingival margin

3



Proximal reduction
≤ 1 mm
with supragingival margin

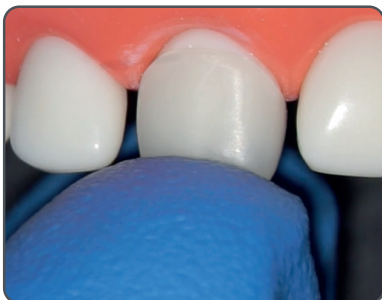
4



Palatal / Lingual reduction
≤ 1 mm
with supragingival margin

Crown Selection / Fit Check / Adjustment

5



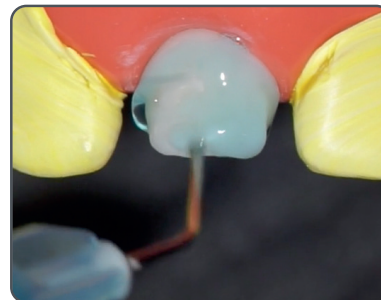
Check and select crown size for
passive path of insertion /
Select composite
colour/shade

6



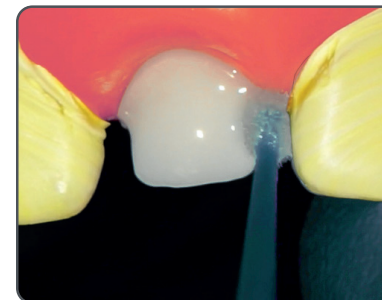
Adjust crown
(Margins, approximal contacts
mesial/distal)

7



Apply 37% phosphoric acid
(Enamel 15 sec / Dentin 7 sec) /
Rinse with water and gently dry
the surface

8

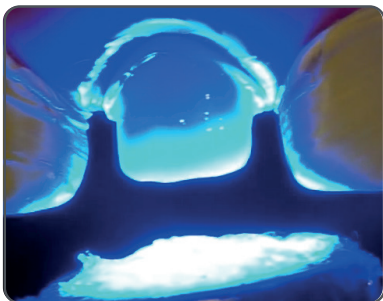


Apply dentin bonding
(according to manufacturer's IFU)

Ceramir Pediatric Crown Step by Step Placement Guide

Tooth Preparation

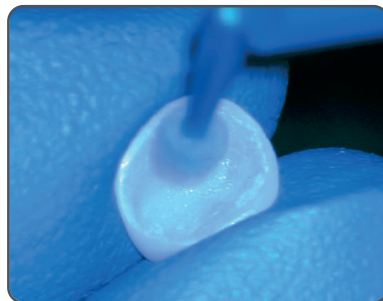
9



Light Cure for 20 s
(according to manufacturer's IFU)

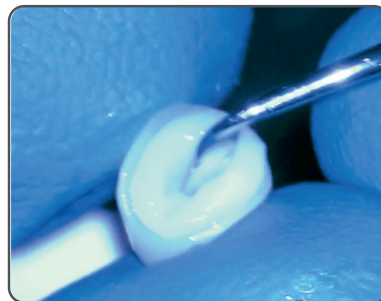
Crown Preparation

10



Roughen the inside of the crown lightly /
Apply a very thin layer of edelweiss VENEER
BOND to inner surface, rub surface for 30 s /
Dry surface with air / Light cure for 20 s
(Or apply equivalent bonding/primer and use it
according to manufacturer's IFU.)

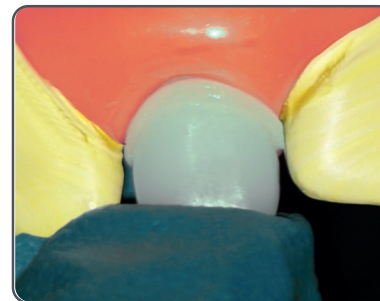
11



Apply adhesive resin
cement / composite into
crown and seat crown

Crown Seating

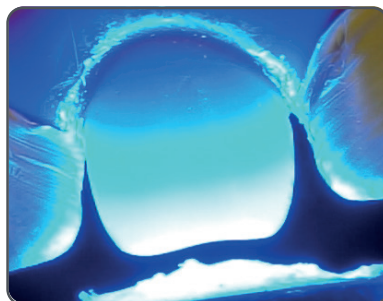
12



Place the crown
(gentle, firm pressure) /
Remove excess composite before
light curing

Crown Seating

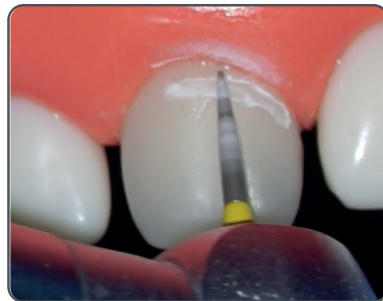
13



Light Cure for 20 s
(according to manufacturer's IFU)

Final Adjustments and Polishing

14



Finish the margins carefully
keeping anatomy intact /
Adjust crown height and form

15



Contour if needed and Polish

Final Result



Final result